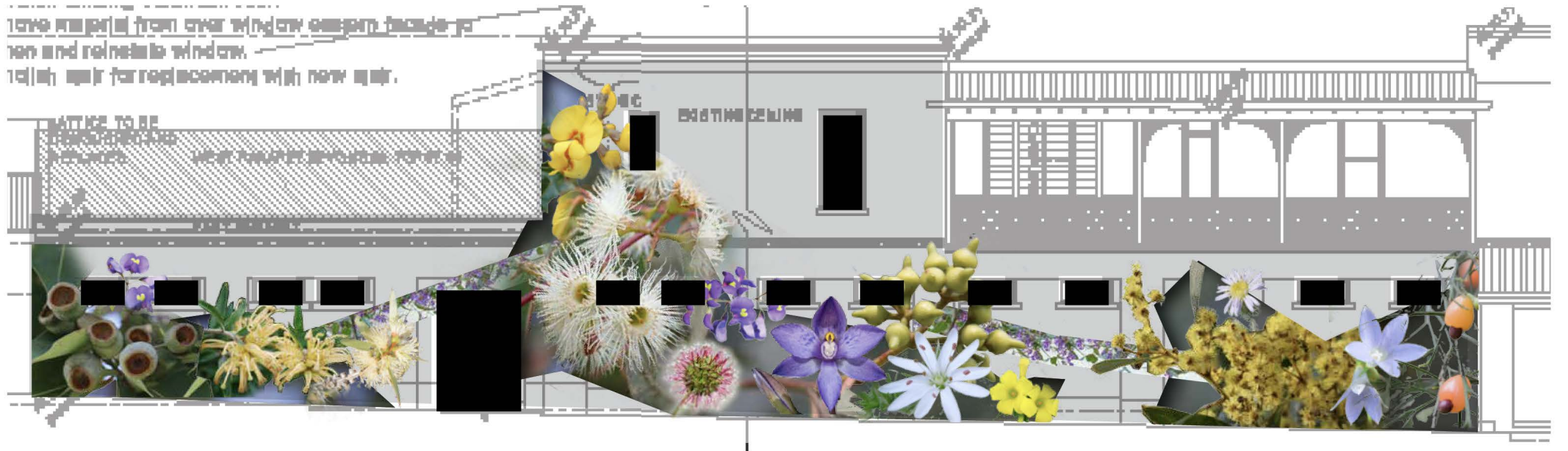


These materials from other windows suggest a  
non-ventilable window.  
They are for replacement with new air.

LATTICE TO BE  
REMOVED  
NEW WINDOW MATERIAL TO BE  
INSTALLED

EXISTING CEILING



## ARTIST STATEMENT

Over the past five years my work has been focused on my passion for local flora and fauna. It is a way for me to directly connect to the area I'm painting in and highlight an aspect of the local environment that I feel is important to showcase. Where possible, I choose plants, birds or animals that are either endangered or threatened, hopefully helping to raise awareness.

Canterbury's green spaces and amazing gardens are among its most valued assets. For this reason I have chosen to focus on local native flora in this mural. My focus is on Native flora however this concept could easily be adjusted to suit a more traditional English garden theme if that is more appropriate for the area. Species chosen are based on my research, trips to the area, local feedback and the Boroondara-inventory-assessmentindigenous- flora-fauna,2005.

By focusing on these ideas I hope to create a mural that not only looks great but will also stimulate community spirit and raise awareness of local flora. It will appeal to a wide demographic and be relevant to locals and tourists alike, and will create a destination for Botany enthusiasts. This design is just an initial concept, more detail/species will be added if successful. Species chosen include:

Grevillea Canterbury Gold  
Australian Native Bluebell – Wahlenbergia

Golden Wattle – *Acacia pycnantha*  
River Red Gum – *Eucalyptus camaldulensis*  
Swamp Gum – *Eucalyptus ovata*  
Bidgee-widgee – *Acaena novae-zelandiae*

I've also included *Hardenbergia violacea*, Native Lilac a native ornamental vine. Again this can be swapped out for a traditional grape to tie in with the street/brief if needed.

## COMPOSITION

As the wall has so many obstacles this has somewhat dictated the composition of my design. I have placed key features on the flat sections and tried to avoid too much detail over pipes, windows etc. The use of cracks to frame detailed sections not only helps with the above and looks great but also adds allot of depth and the illusion of perspective. Giving the feeling of nature bursting from the wall and blending the mural into the building.

I have included second story section assuming access will be possible. If not the design can be adjusted to ground level only.

## TIMEFRAME AND AVAILABILITY

I would give approximately 2 weeks to complete the mural. This would allow for weather contingency or any other small delays. At this stage I am available from mid November 2019.

## INSTALLATION AND MATERIALS

My process for completing a work of this scale is tried and tested. First the wall will be cleaned, patched and primed using appropriate products to cover any damage and create a base surface for painting. I begin the painting stage by applying acrylic base coats to the wall, this gives a perfect even finish and colour. I then move onto the spraypainting stage where I add the detail and the wall comes to life. I work in a systematic way from top to bottom – completing a section almost entirely before moving onto the next. Once I am done I go back over the wall to tweak anything that is needed. I only use the highest quality materials for my murals. The acrylic paint I use is weather and colour proof for over 5 years. I use the best available spraypaint that is sourced from Germany, with access to over 350 colours.

I also recommend a protective clear coat to be applied once the mural is completed.

I follow all associated OH&S issues including storage and personal safety equipment. I have a construction white card and both yellow card and a high risk license to operate scissor and boom lifts.